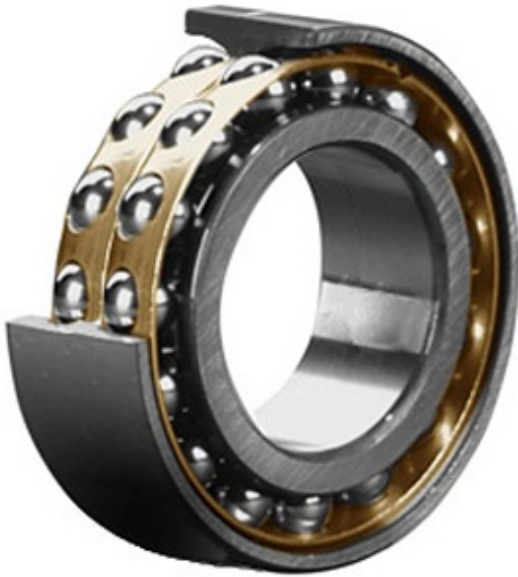




## PRECISION BEARING CORP.



5315 M C/3 Bearing 2D drawings and 3D CAD models

2.953 Inch | 75 Millimeter x 6.299 Inch | 160  
Millimeter x 2.689 Inch | 68.3 Millimeter  
**CONSOLIDATED BEARING 5315 M C/3**  
Angular Contact Ball Bearings

Bearing No. 5315 M C/3

Category	Angular Contact Ball Bearings
Inventory	0.0
Manufacturer Name	CONSOLIDATED BEARING
Minimum Buy Quantity	N/A
Weight	7.41
EAN	0644075121316
Product Group	B00152
Enclosure	Open
Flush Ground	No
Rolling Element	Ball Bearing
Number of Rows of Balls	Double Row
Precision Class	ABEC 1   ISO P0
Maximum Capacity / Filling Slot	Yes
Snap Ring	No
Cage Material	Bronze
Contact Angle	35 degree
Internal Clearance	C3-Loose
Number of Bearings	1 (Single)
Inch - Metric	Metric
Long Description	75MM Bore; 160MM Outside Diameter; 68.3MM Width; Open; No Flush Ground; Ball Bearing;



## PRECISION BEARING CORP.

	Double Row of Balls; ABEC 1   ISO P0; Yes Filling Slot; No Snap Ring
Category	Angular Contact Ball Bearing
UNSPSC	31171531
Harmonized Tariff Code	8482.10.50.28
Noun	Bearing
Keyword String	Angular Contact
Manufacturer URL	<a href="http://www.consbrgs.com">http://www.consbrgs.com</a>
Manufacturer Item Number	5315 M C/3
Weight / LBS	16.32
d	2.953 Inch   75 Millimeter
B	2.689 Inch   68.3 Millimeter
D	6.299 Inch   160 Millimeter